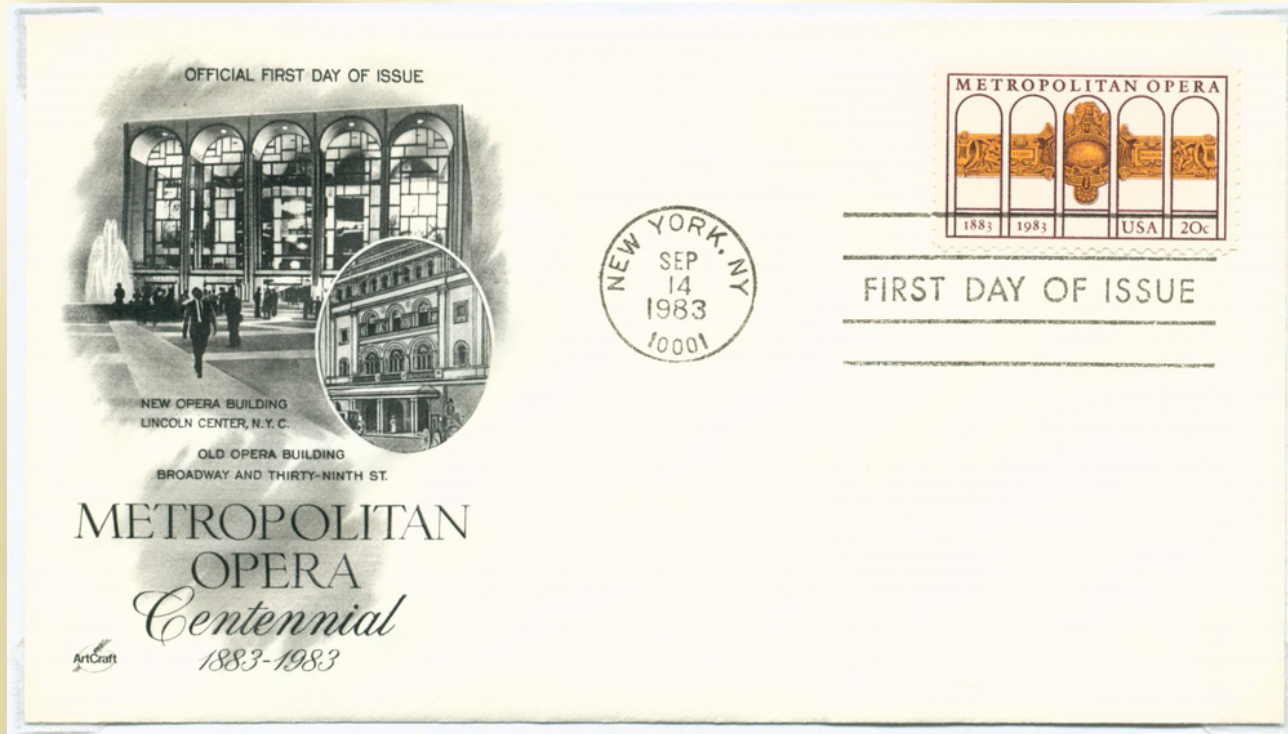


A Night at the Met

by Claire Sewell, clairebrarian@gmail.com



On September 4, 1983 the USPS issued a 20-cent postage stamp commemorating the 100th anniversary of the founding of the Metropolitan Opera in New York City in 1883. ArtCraft's First Day of Issue cachet above depicts the home since 1966 of the Metropolitan Opera at Lincoln Center with an inset of its previous location at Broadway and 39th Street. The stamp, designed by Ken Davies, beautifully combines the past with the present in its depiction of the decorative Beaux-Arts style proscenium arch from the original stage beneath five arches representing the current building's travertine entrance. In 1997 the USPS issued an Opera Singers stamp sheet as a part of its Legends of American Music series, and the groundbreaking contralto Marian Anderson was featured on a stamp in the Black Heritage series in 2005. Anderson was the first African American singer to perform at the Metropolitan Opera. Many other countries have also issued stamps honoring opera singers from their birth places and the art form in general.

The program below represents a fictional concert featuring the nine women on the stamps at the right who all performed on the Met stage during their careers. Click on the blue title text of each aria to watch the corresponding performance on YouTube.

Perchance to Dream

- [Habanera](#) Rosa Ponselle
- [Ave Maria](#) Marian Anderson
- [Casta Diva](#) Maria Callas
- [Quando rapito in estasi](#) Joan Sutherland
- [Vissi d'arte](#) Montserrat Caballe
- [Willow Song](#) Beverly Sills
- [Biem Schlafengehen](#) Jessye Norman
- [Dove sono](#) Kiri Te Kanawa
- [Měsíčku na nebi hlubokém](#) Adrienne Pieczonka

Rosa Ponselle



Soprano (1897 - 1981)

Marian Anderson



Contralto (1897 - 1993)

Maria Callas



Soprano (1923 - 1977)

Joan Sutherland



Soprano (1926 - 2010)

Montserrat Caballe



Soprano (1933 - 2018)

Beverly Sills



Soprano (1929 - 2007)

Jessye Norman



Soprano (1945 - 2019)

Kiri Te Kanawa



Soprano (b. 1944)

Adrienne Pieczonka



Soprano (b. 1963)