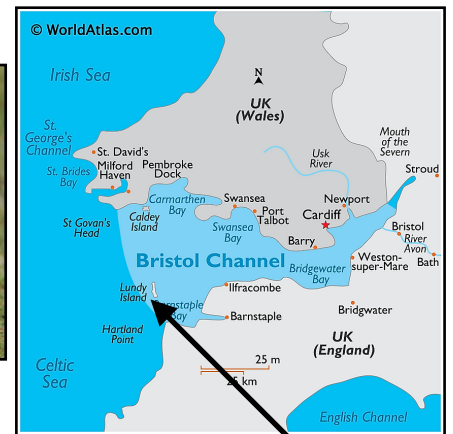


Some Cinderella stamps from the Island of Lundy

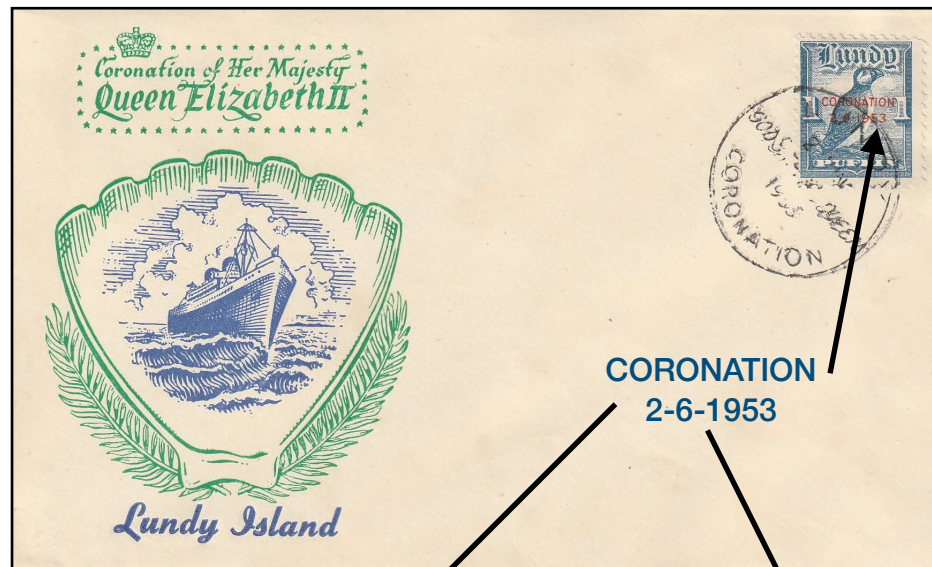
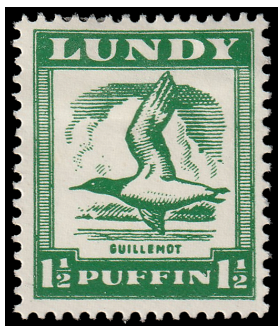
Myron Molnau, hobbies@turbonet.com



Where is Lundy? It is the largest island in the Bristol Channel between Wales and Cornwall. It is the oldest privately operated local post in the world. It began in 1929 and has an active philatelic program to the present day



Lundy



CORONATION
2-6-1953

Three stamps:
no overprint
Coronation
Air Coronation

