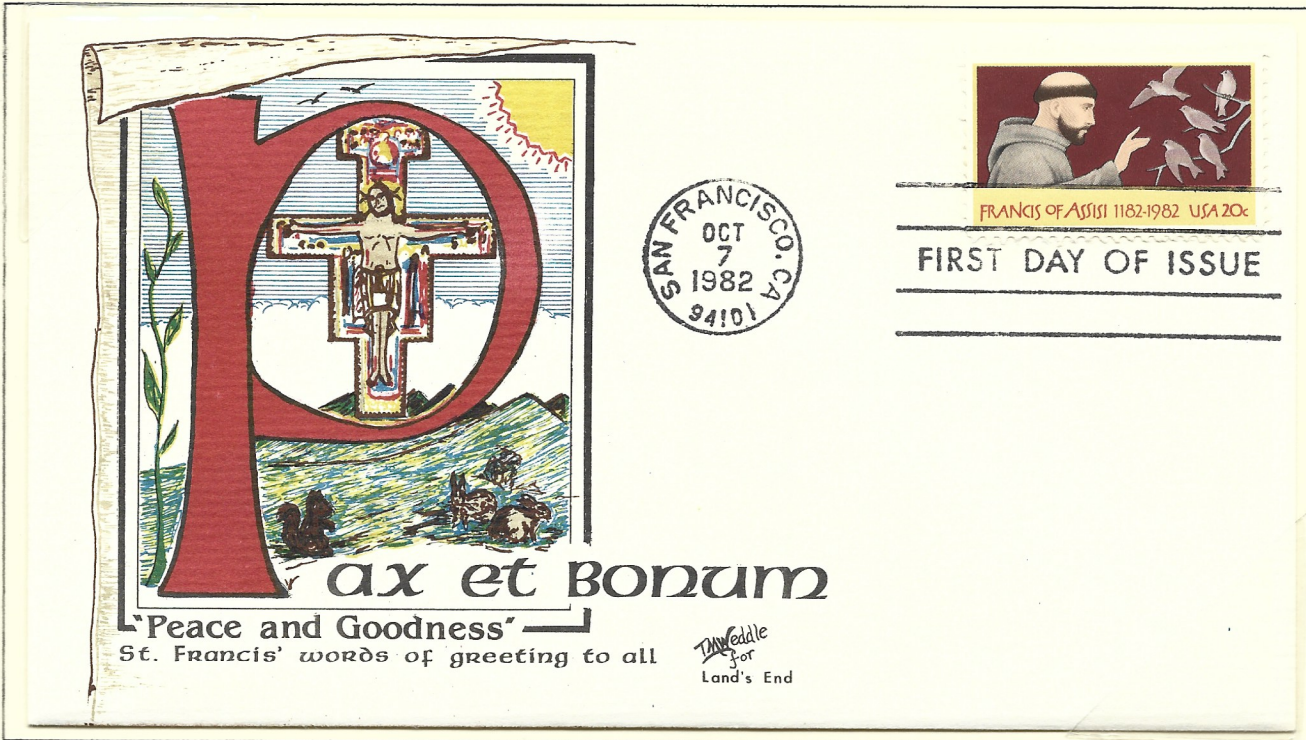


Modern Illuminated Initials

By Susan Jones sjones1665@comcast.net

Illumination began as the medieval art of embellishing books with pictures, letters and borders using brilliant colors, gold leaf and metal foils. *Modern philatelic illumination* generally eschews the gold leaf and foils but retains the brilliant colors. Here are examples of two types of illuminated capital letters.

A Decorated Initial: a large capital letter at the beginning of a word or paragraph.



(left)
 United States
 1982. St. Francis
 of Assisi.
 Cachet by
 T.M. Weddle
 for Land's End.

(below)
 Palau, 1996.

Inhabited Initials: large capital letters containing human or animal figures that are decorative only.

