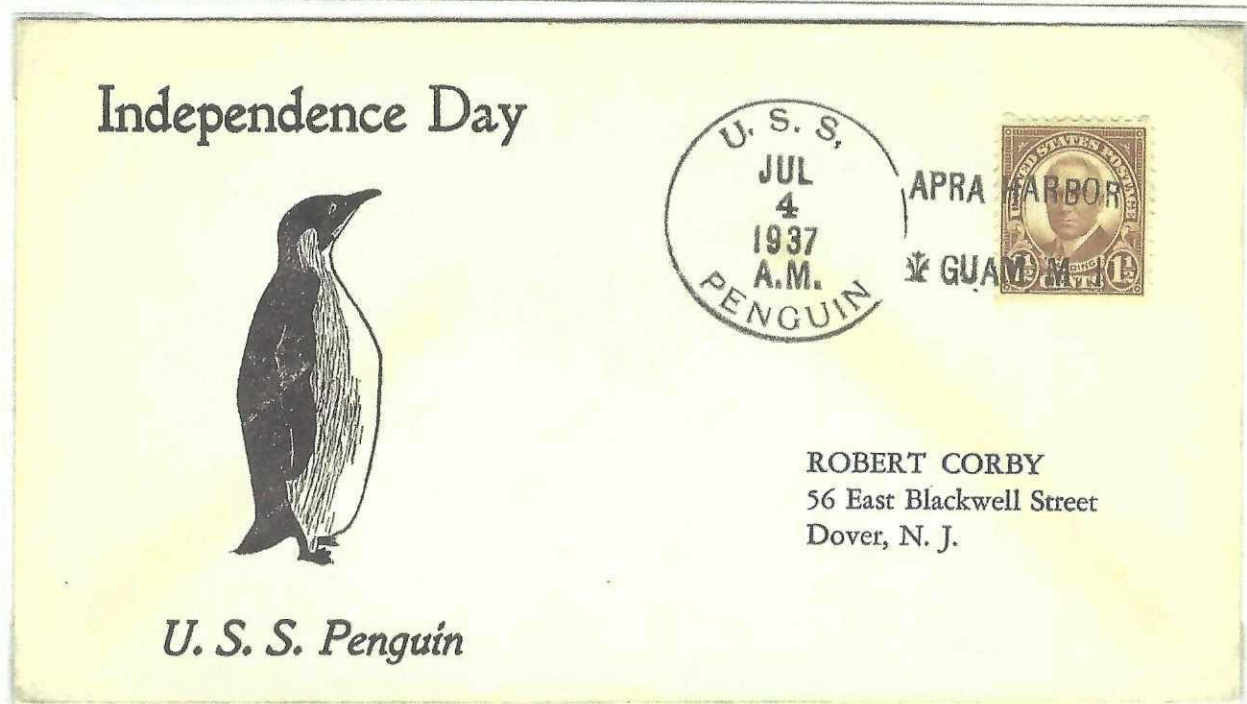


USS Penguin AK-33 Minesweeper 2nd Commissioned by the U. S. Navy

The first USS Penguin was a 389-ton screw steam gunboat that participated in many battles during the Civil War. She was sold in August of 1865 and converted to a sailing schooner in 1884.

The second USS Penguin was a 1009-ton *Lapwing* class minesweeper. She was commissioned in November, 1918, just days after the end of WW I. She was sent to the Atlantic to help with the clearing of wartime mine barrage across the North Sea. For repairs of damage from two mine explosions, she was transferred to Pearl Harbor, Hawaii Territory, at the beginning of 1922.

Battle ready, she was re-commissioned in October 1923 and assigned through the early 1940's to Guam, performing at the request of the local government. With the attack on Pearl Harbor (8 December in Guam) the Penguin helped resist enemy air attacks. Badly damaged she was scuttled later that day in deep waters near the island.



Independence Day cachet and cancel from Apra Harbor, Guam, Mariana Islands

The third USS Penguin was a submarine rescue vessel commissioned in 1944. She is a 1740-ton ASR-12 class ship. She hasn't been involved in any operations since the 1970's.

Sleeve insignia from the USS Penguin

