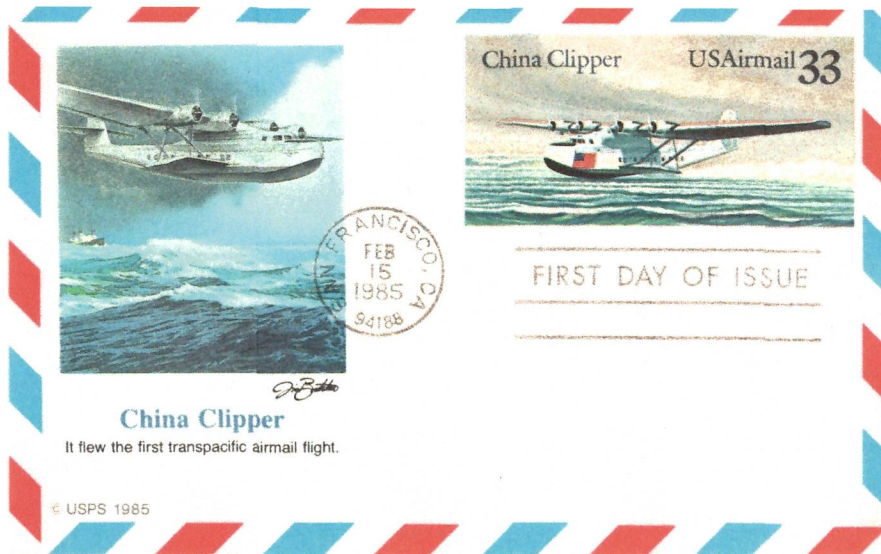


Pan Am crosses the Pacific two first flights

William Slaninko



First flight was 22 November 1935. **From San Francisco to Manila.** Special stamps were issued: 20, 25, and 50 cents to pay the 1/2 ounce rate. First flight in a Martin 130 aircraft. The route was extended to Hong Kong in 1937; first flight to Hong Kong was made on 21 April 1937.

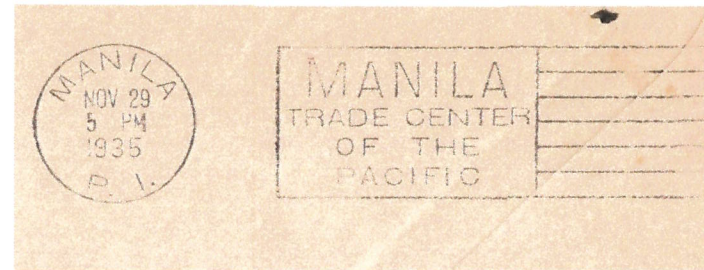


First flight from **San Francisco to Hong Kong.** 21 April 1937.



The journey took six days. Overnight stops at Honolulu, Midway Is., Wake Is., Guam, and Manila. Fiftieth anniversary replica cancels November, 1985.

wslaninko@yahoo.com



Manila Receiving cancel November 29, 1935. First flight.



Three stamps were issued: a 20 cent, 25 cent, and 50 cent, that paid the 1/2 ounce rate when used singly or in combination.



Per 1/2 ounce **FROM** San Francisco **TO:** Honolulu 20 cents, Guam 40 cents, Manila 50 cents, Hong Kong 70 cents.