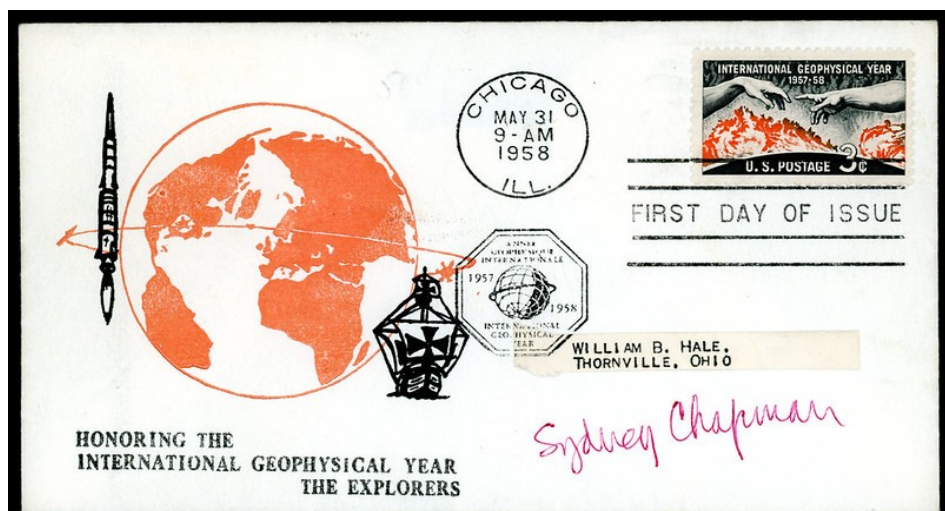


Covers Featuring Administrator-Scientists of the IGY Program

Rob Sternberg (rs_sternberg@yahoo.com; <https://internationalgeophysicalyear.blogspot.com/>)

The International Geophysical Year (IGY) was one of the most ambitious and successful scientific programs ever undertaken. It was an 18-month “year” from July 1, 1957 – Dec. 31, 1958 when scientists representing 67 nations measured many characteristics of the Earth over much of its surface.

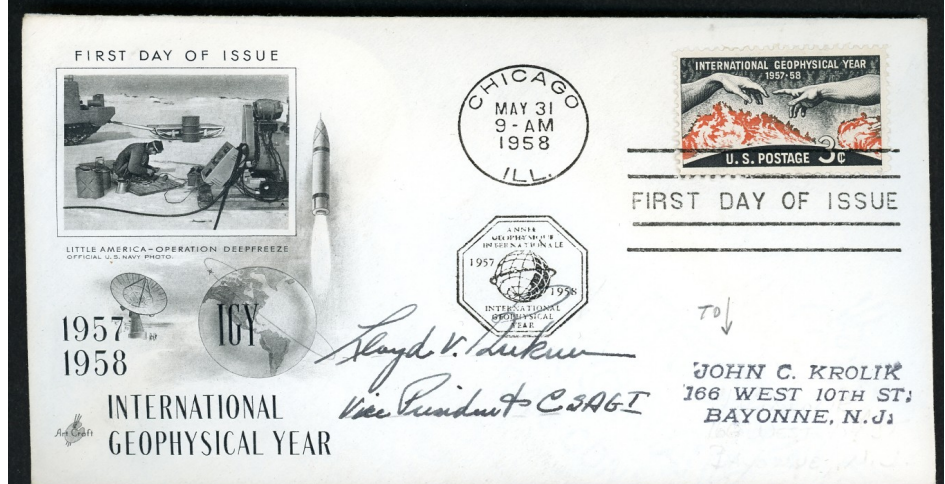
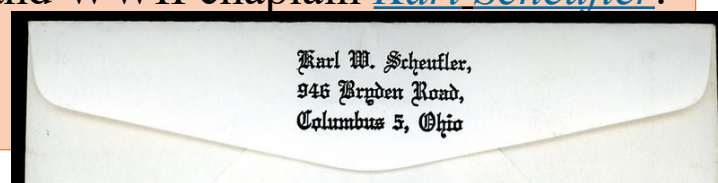
This exhibit shows five first day covers for the U.S. IGY stamp (1107), either signed by or depicting arguably the five most important administrator-scientists of the IGY. Hyperlinks on the pdf of this exhibit will take you to biographies of the people and to scans of the covers.



[Sydney Chapman](#), a geomagnetist and space physicist, was the president of CSAGI (Special Committee for the International Geophysical Year), the international organizing committee for the IGY.

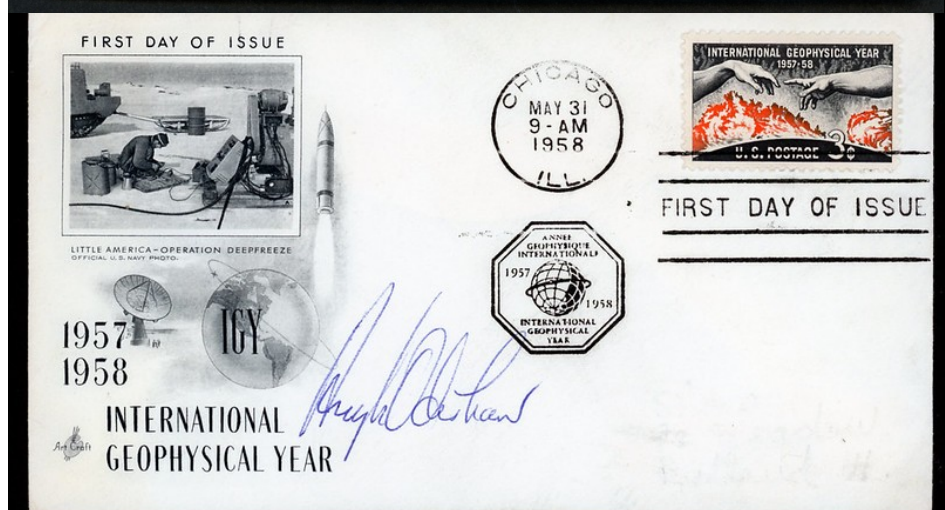
The return address on the back is from noted stamp collector and WWII chaplain [Karl Scheufler](#).

See the cover in detail [here](#).



[Lloyd V. Berkner](#), a rear admiral, ionospheric physicist, atmospheric scientist, and proponent of international cooperation in science, was the vice president of CSAGI. Along with Chapman, he was present at the 1950 soiree at the house of James Van Allen where the IGY was first proposed.

See the cover in detail [here](#).



[Hugh Odishaw](#) was the executive director of the U.S. National Committee for the IGY. He authored many articles about the IGY for general audiences, and edited a number of books on geophysics. He served as dean of the College of Earth Sciences at the University of Arizona from 1972-84 (including my time as a graduate student there from 1974-83).

See the cover in detail [here](#).



[Joseph Kaplan](#), an atmospheric chemist and physicist, was the chairperson of the U.S. National Committee for the IGY for 10 years. In 1955 Kaplan announced that the U.S. would launch an earth satellite during the IGY, which was eventually Explorer 1 in 1958. He served as president of the International Union of Geodesy and Geophysics.

See the cover (with add-on cachet) in detail [here](#).



[Alan H. Shapley](#), a solar-terrestrial physicist, was the vice chairperson of the U.S. National Committee for the IGY. He was an active member of CSAGI as coordinator for the World Days Program and the International Geophysical Calendar. He was the founding director of the U.S. National Geophysical Data Center.

See the cover in detail [here](#).