



# Red Panda: The Vanishing Firefox

Vivan Deshpande – deshpande.tushar@gmail.com



The exhibit aims to spread awareness about Red Panda.

Red Panda, also known as the Firefox (*Ailurus fulgens*), is a shy animal found in eastern Himalayan regions of India, China, Nepal and Bhutan. A typical Red Panda is about the size of a domestic cat and weighs 3.7 to 6.2 kg. It is omnivorous. There are less than 10,000 red panda's remaining in the world today. Conservation status of Red Panda is **ENDANGERED**.

Red Panda's face is brown and has white stripes.

It is known as Himalayan Lesser Panda .



डाक टिकट पुस्तिका  
**STAMP BOOKLET**

Containing 8 stamps of Rs. 5 each)



Booklet issued by India in 2005

A Red Panda family has 2 to 3 members.

Red Panda has a reddish brown fur, a long, shaggy tail and a waddling gait due to its shorter front legs.

A small body mass allows it to walk on branches. Red Panda's are excellent climbers as they have as they have strong, curved claws.



Postal stamp issued by India in 1963



Postal stamp issued by Bhutan in 1993

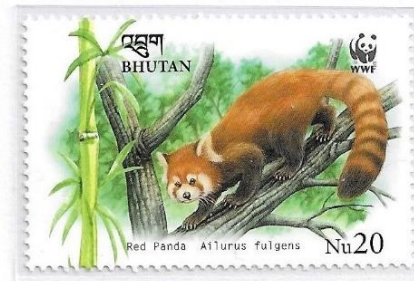


Postal stamp issued by Bhutan in 2009

Red Panda's feed mainly on leaves of bamboo. The occasionally eat fruits, insects, bird eggs and small eggs too.



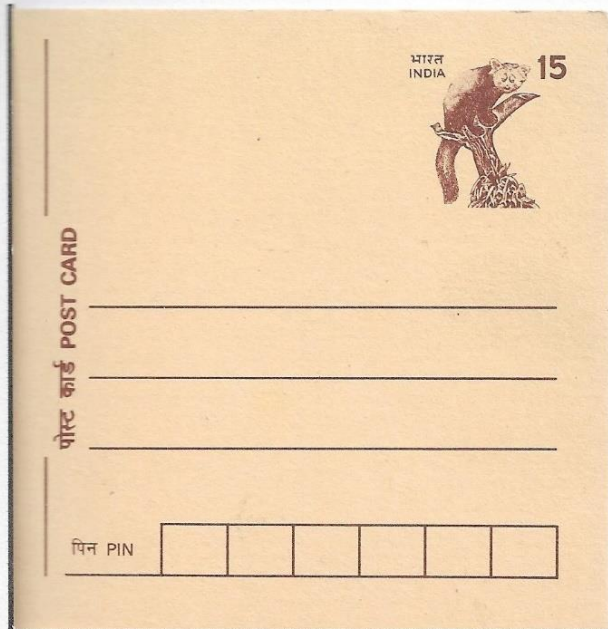
Postal stamp issued by Bhutan in 2009



Postal stamp issued by Bhutan in 2009



Postal stamp issued by Bhutan in 2009



Postcard issued by India

It lives in high altitude, temperate forests with bamboo understories in the Himalayas and other mountains.



Postal stamp issued by India in 2009

Red Panda's are nocturnal and arboreal. They spend their day by sleeping on trees.