

# QUEEN VICTORIA STAMPS ON STAMPS

by PRAVEEN GANESHAN

STAMPS ON STAMPS IS A PHILATELY TERM WHICH MEANS A PREVIOUSLY ISSUED STAMP IS USED AGAIN AS A SINGLE STAMP OR A PART OF A STAMP. I INDIVIDUALLY FASCINATED ABOUT QUEEN VICTORIA AND THE FIRST STAMP ISSUED IS OF VICTORIA (THE BLACK PENNY ALONG WITH TWO BLUE PENNCE). SO I DECIDED TO DEDICATE THIS ONE SHEET EXHIBIT TO QUEEN VICTORIA AND I AM USING HER STAMPS ON STAMPS FOR THIS EXHIBIT.

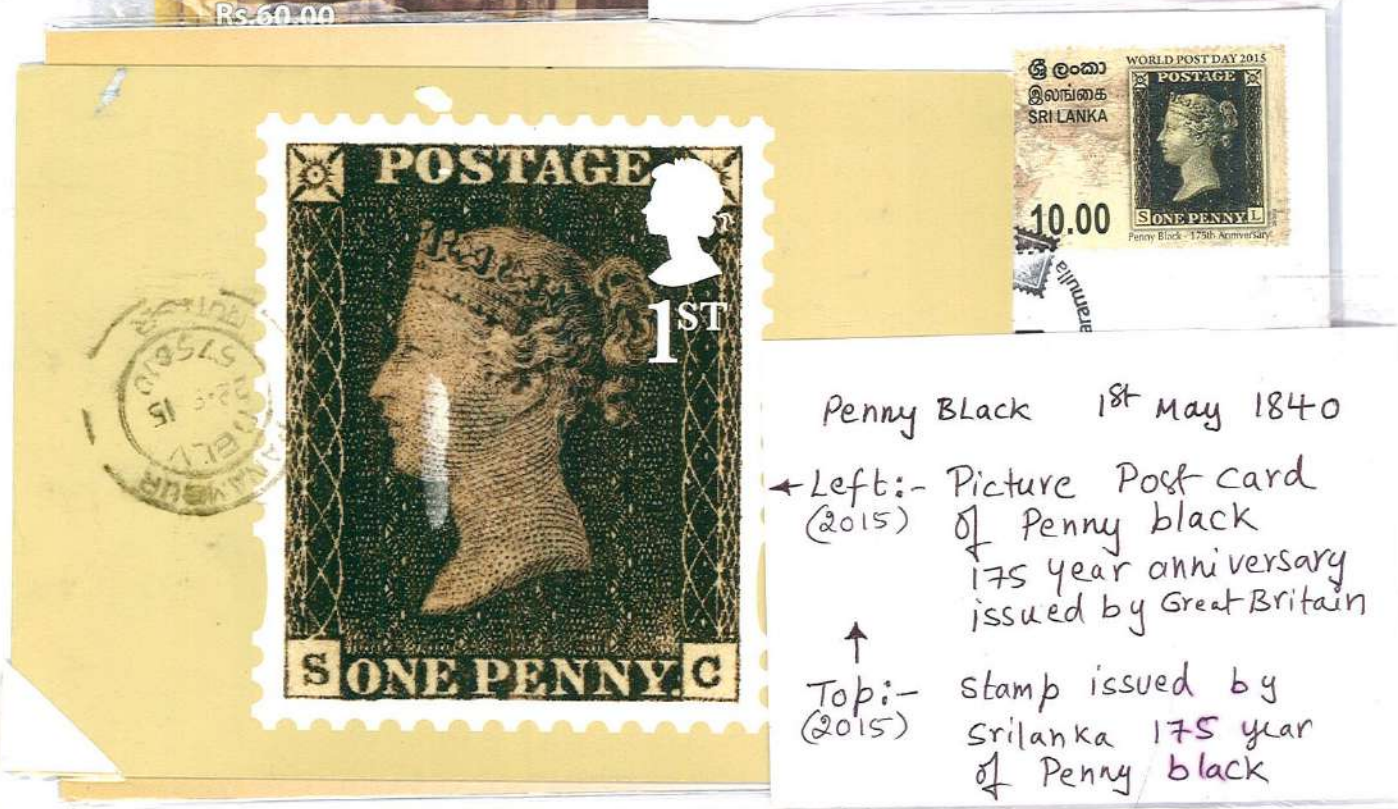
1854 OCTOBER 13 → 2012  
 4 ANNAS INDIA ↓ PHILATELY DAY



CLOCKWISE FROM TOP LEFT

1. SIX PENNCE 1 APRIL 1857
2. FOUR PENNCE 23 APRIL 1859
3. NINE PENNCE 23 APRIL 1859
4. EIGHT PENNCE 23 APRIL 1859

← STAMPS ISSUED ON 160 ANNIVERSARY OF FIRST POSTAGE STAMP OF SRI LANKA (2017)



Penny Black 1<sup>st</sup> May 1840

← Left:- Picture Post card (2015) of Penny black 175 year anniversary issued by Great Britain

↑ Top:- stamp issued by Sri Lanka 175 year of Penny black