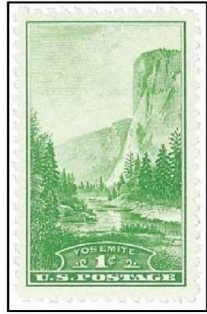


As a stamp collector, President Franklin D. Roosevelt reviewing suggestions for the 1934 stamps schedule, Secretary of the Interior Harold Ickes saw an opportunity to advertise the national park system. Ickes felt many Americans were unaware the federal government had set aside vast amounts of land for their enjoyment and for future generations. At his suggestion, 1934 had been declared National Parks Year. President Franklin D. Roosevelt approved the idea immediately, and ten parks were chosen for the 1934 stamp issue. There are a total 423 national park sites in the USA but only 63 are National Parks. State with the most national parks in California. Seventeen states without any national parks. Most national park land Alaska 54 million acres. National Parks can only be designated by an act of Congress unlike many units in National parks systems which can be designated through executive action or secretarial order.



Yosemite National Park (California)



The Grand Canyon (Arizona)



Mirror Lake at Mount Rainier (Washington)



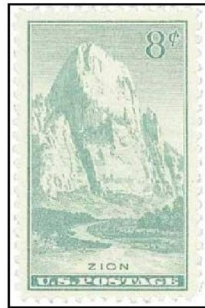
Cliff Palace at Mesa Verde Park (Colorado)



Old Faithful at Yellowstone Park (Wyoming)



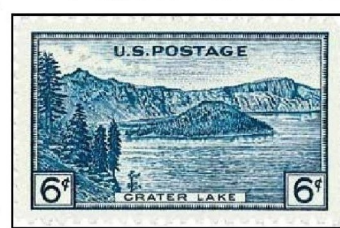
Great Smoky Mountains National Park (North Carolina)



Great White Throne in Zion National Park (Utah)



Great Head in Acadia Park (Maine)



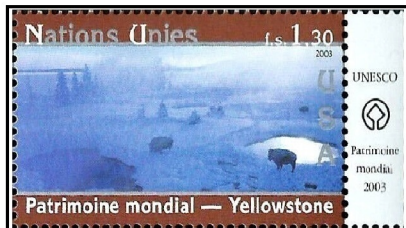
Crater Lake (Oregon)



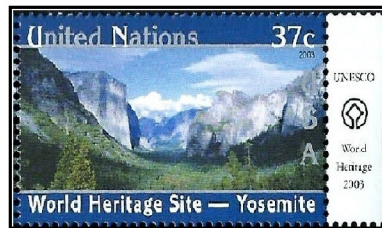
Mt. Rockwell and Medicine Lake in Glacier National Park (Montana)



1947 Everglades National Park



2003 UN World Heritage sites Yellow Stone and Yosemite National Parks



1972 National Parks centennial, Old Faithful, Yellow Stone, Mount Mckley, Alaska



## NATIONAL PARKS



USA 2016 sixteen National Park Service sites featured on Forever Stamps are Acadia National Park, Arches National Park, Assateague Island National Seashore, Bandelier National Monument, Carlsbad Caverns National Park, Everglades National Park, Glacier Bay National Park and Preserve, Grand Canyon National Park, Gulf Islands National Seashore, Haleakalā National Park, Kenilworth Park & Aquatic Gardens, Marsh-Billings-Rockefeller National Historical Park, Mount Rainier National Park, San Francisco Maritime National Historic Park, Theodore Roosevelt National Park and Yellowstone National Park. MS